



LED Wall Light

ARA 88 Series



Introduction

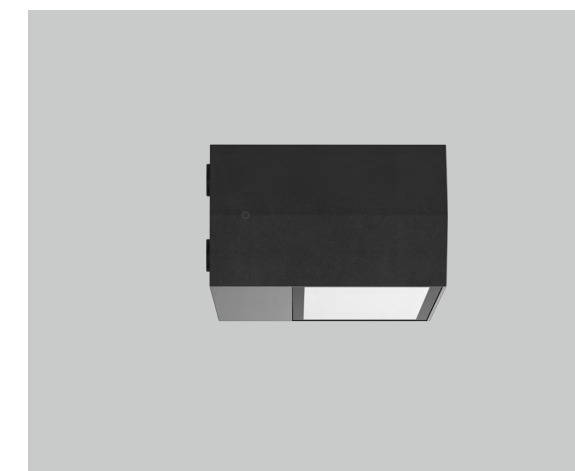
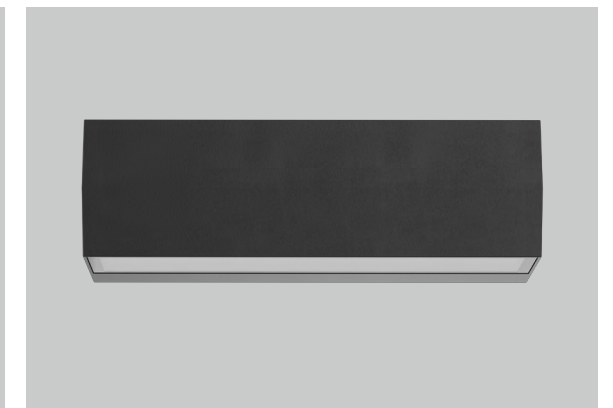
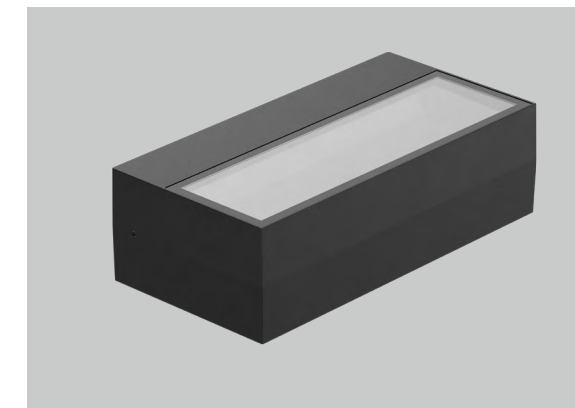
ARA 88 wall lamp is designed as an up & down lighting fixture. The lamp body is made of die cast aluminum, which has good heat dissipation. The lamp surface is sprayed with outdoor sand grain powder, which is corrosion resistant. ARA88 uses SMD LED chips enabling the option of CCT changing if required. Strong structure design, IP65 waterproof will suit to a wider application area.

Features

- Up & down lighting design.
- IP65 waterproof.
- Special reflector makes it a better wall washer effect.
- Interchangeable CCT(3000K+4000K+5700K)with slide switch.
- Loop in/loop out wire entry design.
- Internal flicker free driver.

Application Areas

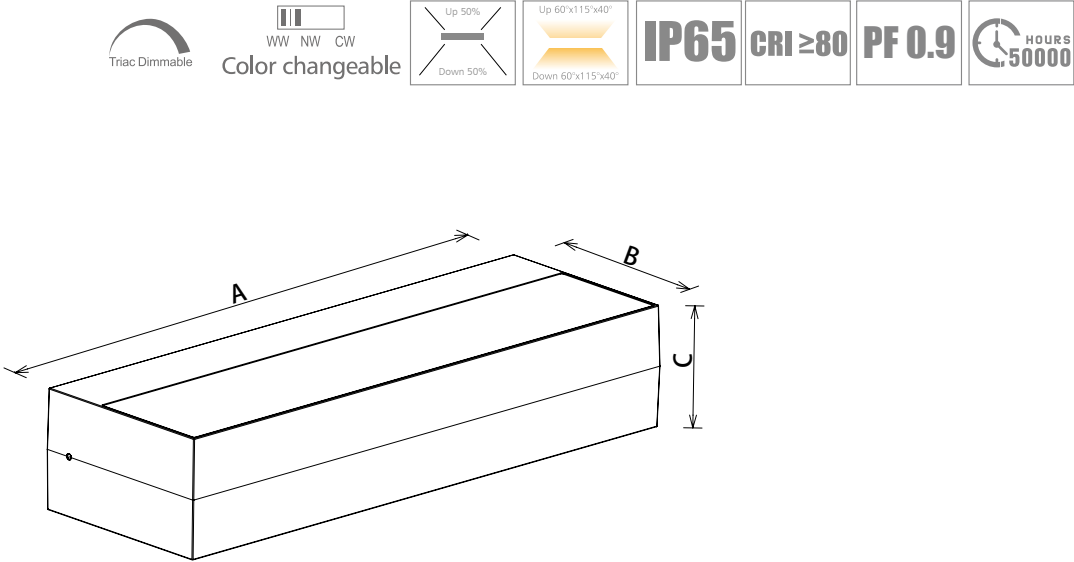
It is designed for indoor and outdoor lighting applications hotel, park, and corridors etc.





Technical Data Sheet

Code No.			WL200N/10**88	WL300N/15**88
Dimension(mm)			200*100*60	300*100*60
Cutout (mm)			-	
Watt(W)			10W	15W
Rated Input Voltage(V)			AC230V	
Input Voltage(V)			AC220-240V	
LED Module Input			-	
Light Source			SMD	
SDCM			<6	
CCT(K)			1-CCT:3000K/4000K/5000K/5700K 3-CCT: 3000K + 4000K + 5700K	
CCT Selection DIP Switch			YES	
Luminous Flux (lm) ±5%	Non-DIM	1-CCT	600-750	850-1100
	DIM		550-700	800-1050
	Non-DIM	3-CCT	600-750	850-1100
			-	
CRI			80	
Beam Angle (°)			60°x115°x40°	
UGR			-	
LED Driver			Built-in	
Dimming Option			Triac	
Sensor			NO	
Emergency Kits			NO	
Electrical Class			Class I	
Ingress Protection (IP Rating)			IP65	
Impact Resistance (IK Rating)			-	
Product Finishing(Base)			Black (RAL9005)	
Materials of Optics			PC/Glass	
Materials of Housing			Aluminum ADC12	
Lifetime (hr)			5,0000h	
Glow wire test (°C)			750°C	
Operating Temp. (°C)			-20°C ~45°C	
Storage Temp. (°C)			-20°C ~65°C	
Installation			Wall mount	



Measurement

Code	Dimension(mm)			Size(mm)	Product Weight (Kg)		Package weight (Kg)		Carton Size(cm)	Qty/CTN	20GP (pcs)	40HQ (pcs)
	A	B	C		N.W/PC	G.W/PC	N.W/CTN	G.W/CTN				
ARA 88-10W	200	100	60	200*100*60	0.71	0.832	8.52	10.65	51*32.5*35.5	12	5616	13608
ARA 88-15W	300	100	60	300*100*60	1.09	1.26	13.1	15.96	64*36*35.5	12	4104	9828

Driver Datasheet (Non-dimmable)

Total load wattage		10W	15W
Output	Output Voltage range	DC65-75V	
	Rated output current	135mA	190mA
	Line Regulation	±5%	
	Setup, Rise Time	≤0.5S	
	Flickering Index	<3%(NO RISK)	
Input	Input Voltage	AC220-240V	
	Rated Input Voltage(V)	AC230V	
	Frequency	50/60HZ	
	Input Current	≤0.06A	≤0.08A
	Rated Input Current	≤0.05A	≤0.08A
	Power Factor	0.9	
	THD	-	
	Efficiency	≥85%	
Protection	No load wattage	≤0.5W	
	Short circuit protection	PASS	
	Over voltage protection	PASS	
Safety &EMC	Over temperature protection	PASS	
	Withstand voltage	I/P-FG:1.5KVac,<5mA 60S	
	Isolation Resistance	500VDC, ≥2M Ω	
	Surge	IEC/EN61000-4-5(P<25W; L-N:500V)	
	EMC Emission	EN55015, EN61000-3-2	
	EMC Immunity	EN61000-4-2,3,4,5,6,8,11; EN61547	

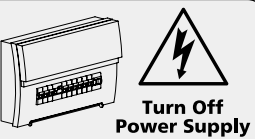
Driver Datasheet (Triac Dimmable)

Total load wattage		10W	15W
Output	Output Voltage range	DC65-75V	
	Rated output current	120mA	180mA
	Line Regulation	±5%	
	Setup, Rise Time	≤0.5S	
	Flickering Index	<5%(LOW RISK)	
Input	Input Voltage	AC200-240V	
	Rated Input Voltage(V)	AC230V	
	Frequency	50HZ	
	Input Current	≤0.06A	≤0.09A
	Rated Input Current	≤0.05A	≤0.08A
	Power Factor	0.85	0.9
	THD	-	
	Efficiency	≥81%	≥83%
Protection	No load wattage	≤1W	
	Short circuit protection	PASS	
	Over voltage protection	PASS	
	Over temperature protection	PASS	
Safety &EMC	Withstand voltage	-	
	Isolation Resistance	-	
	Surge	IEC/EN61000-4-5(P<25W; L-N:500V, L/N-PE:1KV)	
	EMC Emission	EN55015, EN61000-3-2	
EMC Immunity		EN61000-4-2,3,4,5,6,8,11; EN61547	

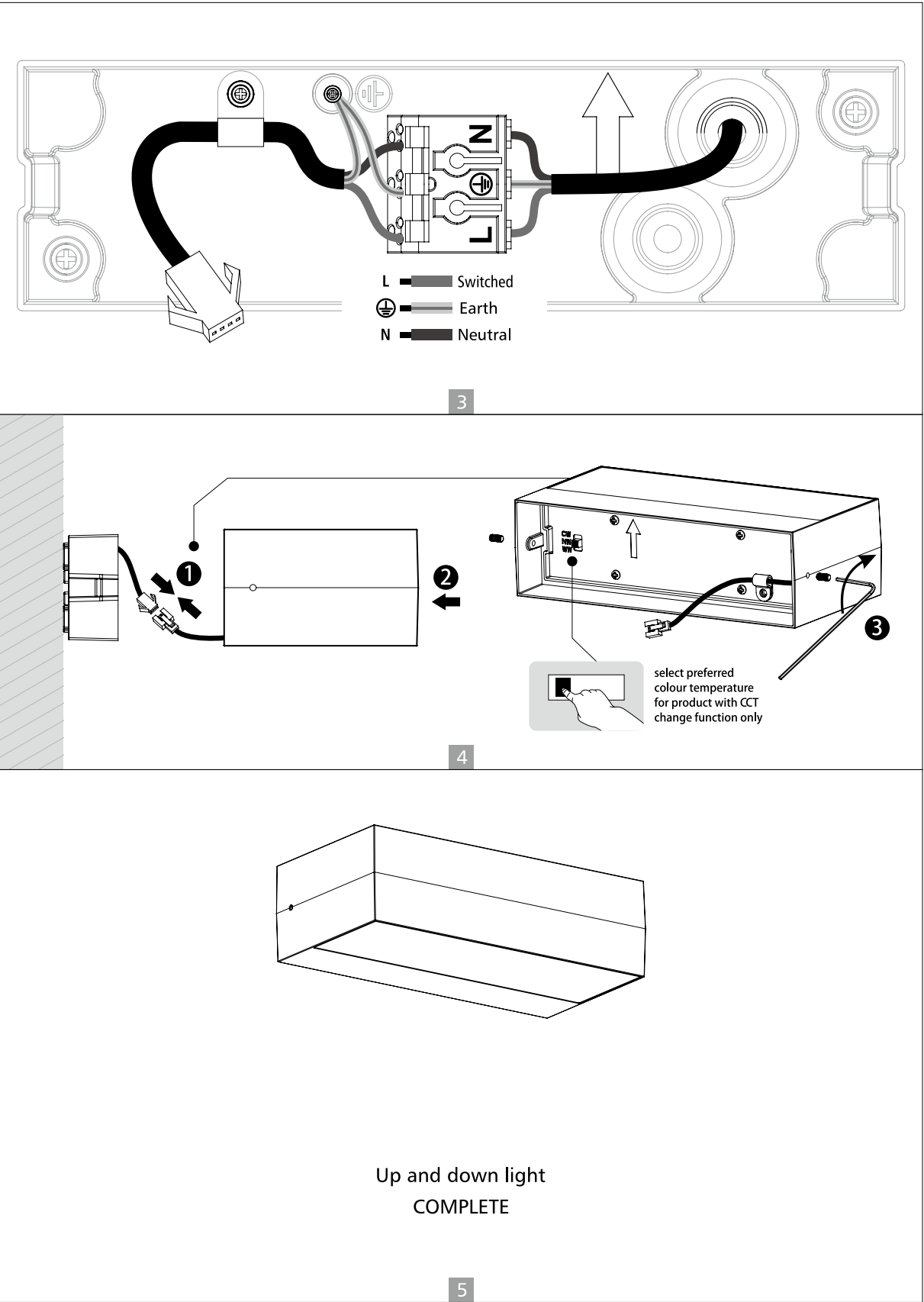
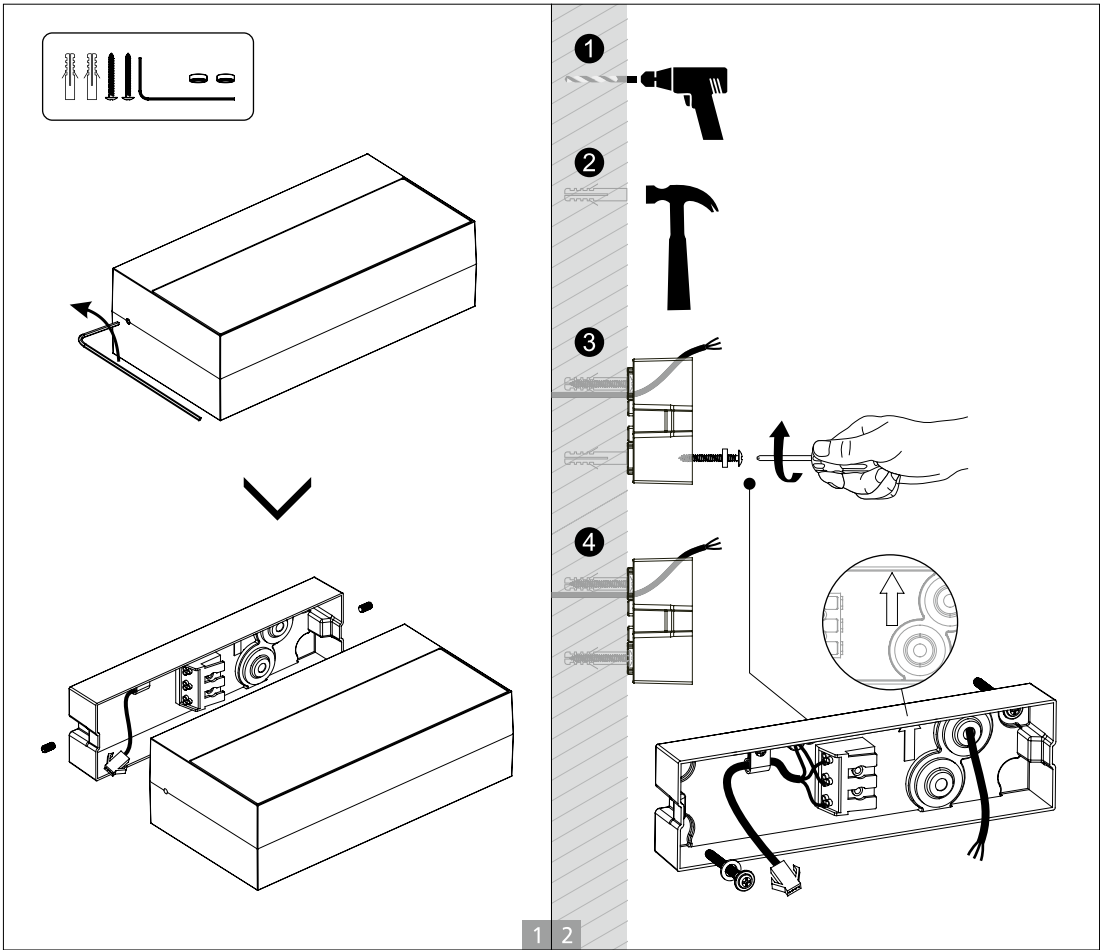
Installation Instruction

WARNING

- 1.Switch off before installation.
- 2.Switch on only after complete installation and examination of the circuit.
- 3.Professional electrician for installation and maintenance only.



Wall mounted installation





The Professional Choice in LED Lighting

www.genesisone.co.za sales@genesisone.co.za TEL: +27 (0)11 4620251

Add: 2 Lancaster Place, Electron Lane, Lanseria Corporate Estate, Lanseria 1748 Johannesburg, South Africa