

LED Wall Light

ARA91 Series





## Introduction

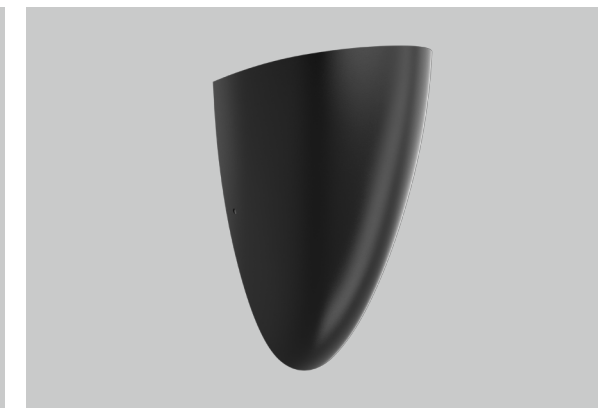
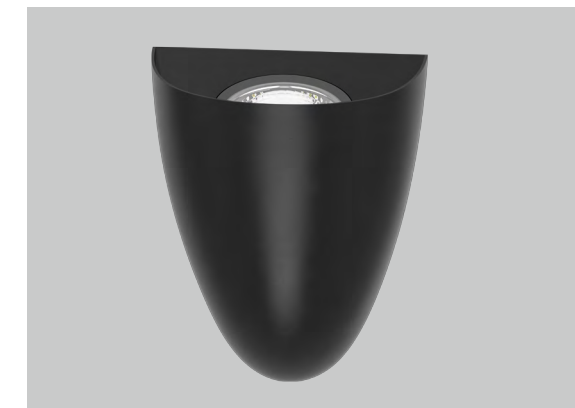
ARA 91 is manufactured with a SMD light source and a tempered glass cover with high light transmittance which offers uniform light output. ADC12 aluminum housing with arc surface offers a larger heat dissipation area which provides excellent thermal management. IP65 waterproof for outdoor application area.

## Features

- IP65 waterproof for outdoor application area.
- Interchangeable CCT(3000K+4000K+5700K)with slide switch.
- Internal flicker free driver.
- Can be installed in up or downward.
- Can do triac dimming for single CCT version.

## Application Areas

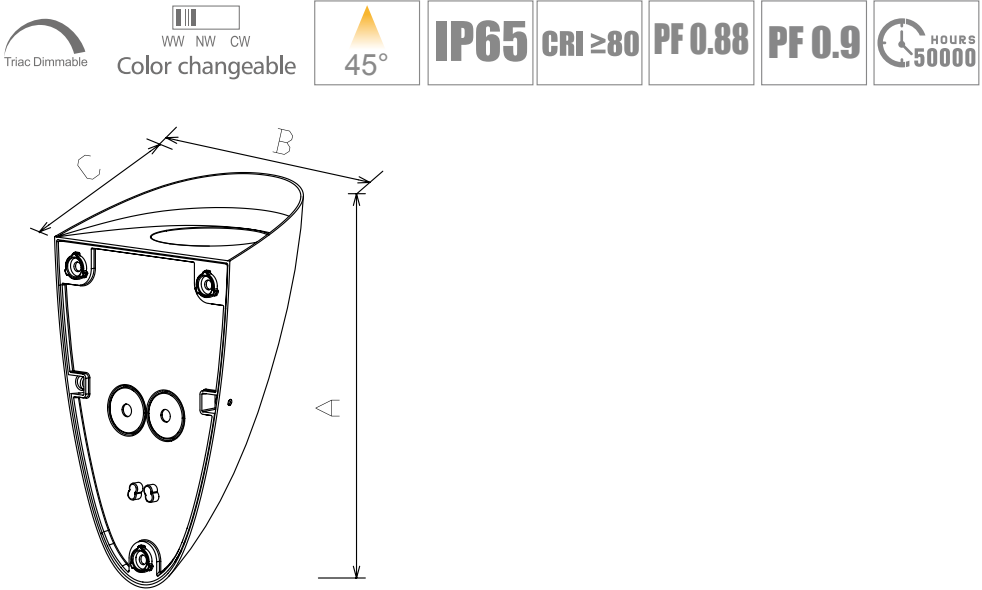
It is designed for indoor and outdoor lighting applications hotel, park, corridors etc.





Technical Data Sheet

Code No.			WL202N/08**91		
Dimension(mm)			202*121*95		
Cutout (mm)			-		
Watt(W)			8W		
Rated Input Voltage(V)			AC230V		
Input Voltage(V)			AC220-240V		
LED Module Input			-		
Light Source			SMD		
SDCM			<6		
CCT(K)			1-CCT:3000K/4000K/5000K/5700K   3-CCT: 3000K + 4000K + 5700K		
CCT Selection DIP Switch			YES		
Luminous Flux (lm) ±5%	Non-DIM	1-CCT	745-800		
	DIM		700-750		
	Non-DIM	3-CCT	680-760		
			-		
CRI			80		
Beam Angle (°)			45°		
UGR			-		
LED Driver			Built-in		
Dimming Option			Triac		
Sensor			NO		
Emergency Kits			NO		
Electrical Class			Class I		
Ingress Protection (IP Rating)			IP65		
Impact Resistance (IK Rating)			IK06		
Product Finishing(Base)			Black (RAL9005)		
Materials of Optics			PC		
Materials of Housing			Aluminum ADC12		
Lifetime (hr)			5,0000h@25°C		
Glow wire test (°C )			750°C		
Operating Temp. (°C )			-20°C ~45°C		
Storage Temp. (°C )			-20°C ~65°C		
Installation			Wall mount		



Measurement

Code	Dimension(mm)			Size(mm)	Product Weight (Kg)		Package weight (Kg)		Carton Size(cm)	Qty/CTN	20GP (pcs)	40HQ (pcs)
	A	B	C		N.W/PC	G.W/PC	N.W/CTN	G.W/CTN				
WL202N/08**91	202	121	95	202*121*95	0.5	0.65	6	8.78	51.5*48.5*30	12	4092	9936

Driver Datasheet (Non-dimmable)

Total load wattage		8W	
Output	Output Voltage range	DC65-75V	
	Rated output current	105mA	
	Line Regulation	±5%	
	Setup, Rise Time	≤0.5S	
	Flickering Index	NO RISK	
Input	Input Voltage	AC220-240V	
	Rated Input Voltage(V)	AC230V	
	Frequency	50/60HZ	
	Input Current	≤0.05A	
	Rated Input Current	≤0.04A	
	Power Factor	0.9	
	THD	-	
	Efficiency	≥85%	
Protection	No load wattage	≤0.5W	
	Short circuit protection	PASS	
	Over voltage protection	PASS	
Safety &EMC	Over temperature protection	PASS	
	Withstand voltage	I/P-FG:1.5KVac, <5mA 60S	
	Isolation Resistance	500VDC, ≥2M Ω	
	Surge	IEC/EN61000-4-5( P<25W; L-N:500V)	
	EMC Emission	EN55015, EN61000-3-2	
	EMC Immunity	EN61000-4-2,3,4,5,6,8,11; EN61547	

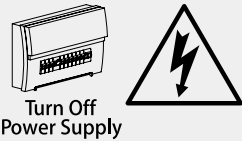
Driver Datasheet (Triac Dimmable)

Total load wattage		8W
Output	Output Voltage range	DC65-75V
	Rated output current	95mA
	Line Regulation	± 5%
	Setup, Rise Time	≤ 0.5S
	Flickering Index	≤ 5% (NO RISK)
Input	Input Voltage	AC200-240V
	Rated Input Voltage(V)	AC230V
	Frequency	50HZ
	Input Current	0.05A
	Rated Input Current	0.04A
	Power Factor	0.88
	THD	-
	Efficiency	≥ 85%
Protection	No load wattage	≤ 1W
	Short circuit protection	PASS
	Over voltage protection	PASS
	Over temperature protection	PASS
Safety & EMC	Withstand voltage	I/P-FG:1.5KVac, <5mA 60S
	Isolation Resistance	500VDC, ≥2M Ω
	Surge	IEC/EN61000-4-5( P<25W; L-N:500V), L/N-PE:1KV
	EMC Emission	EN55015, EN61000-3-2
EMC Immunity		EN61000-4-2,3,4,5,6,8,11; EN61547

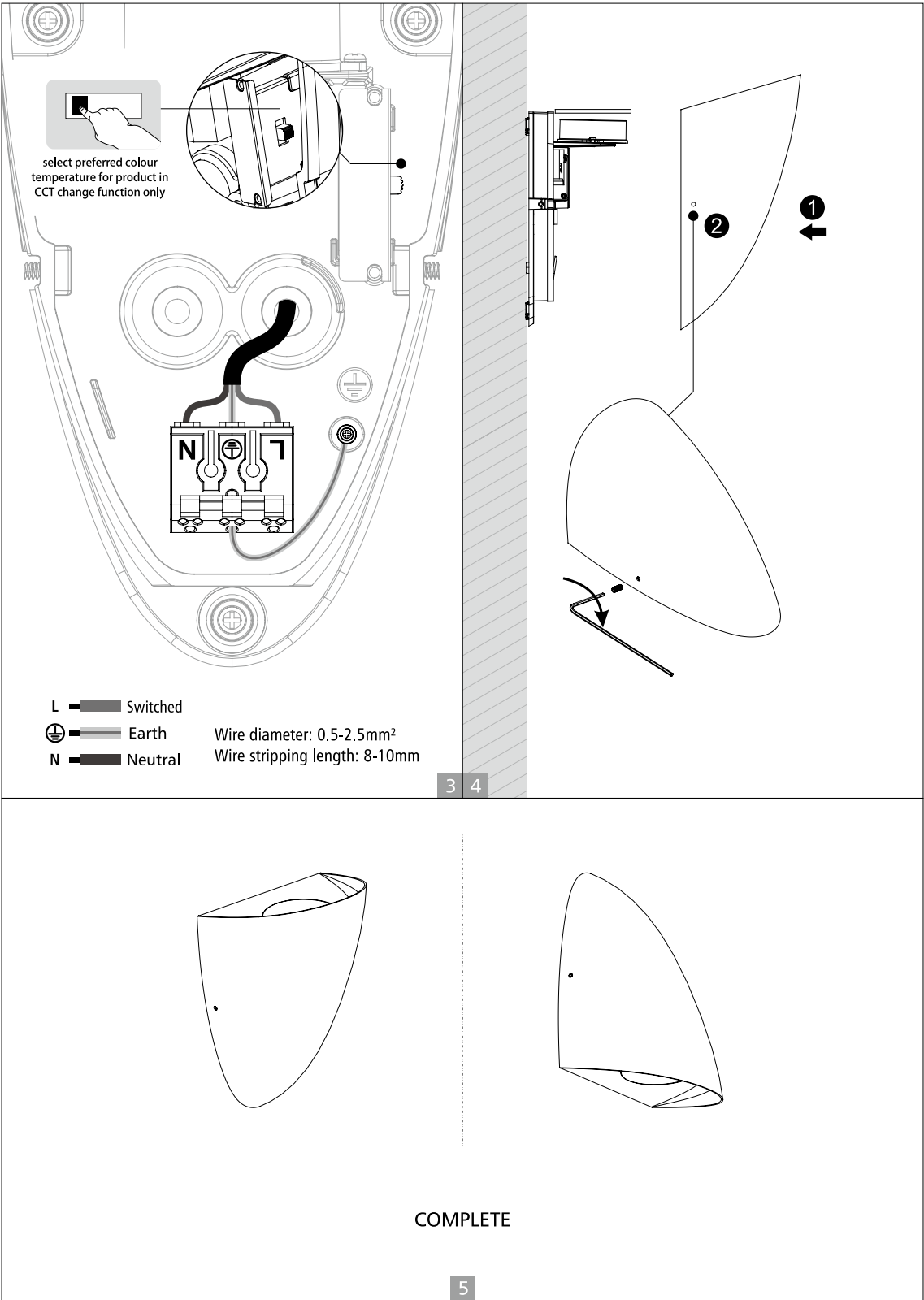
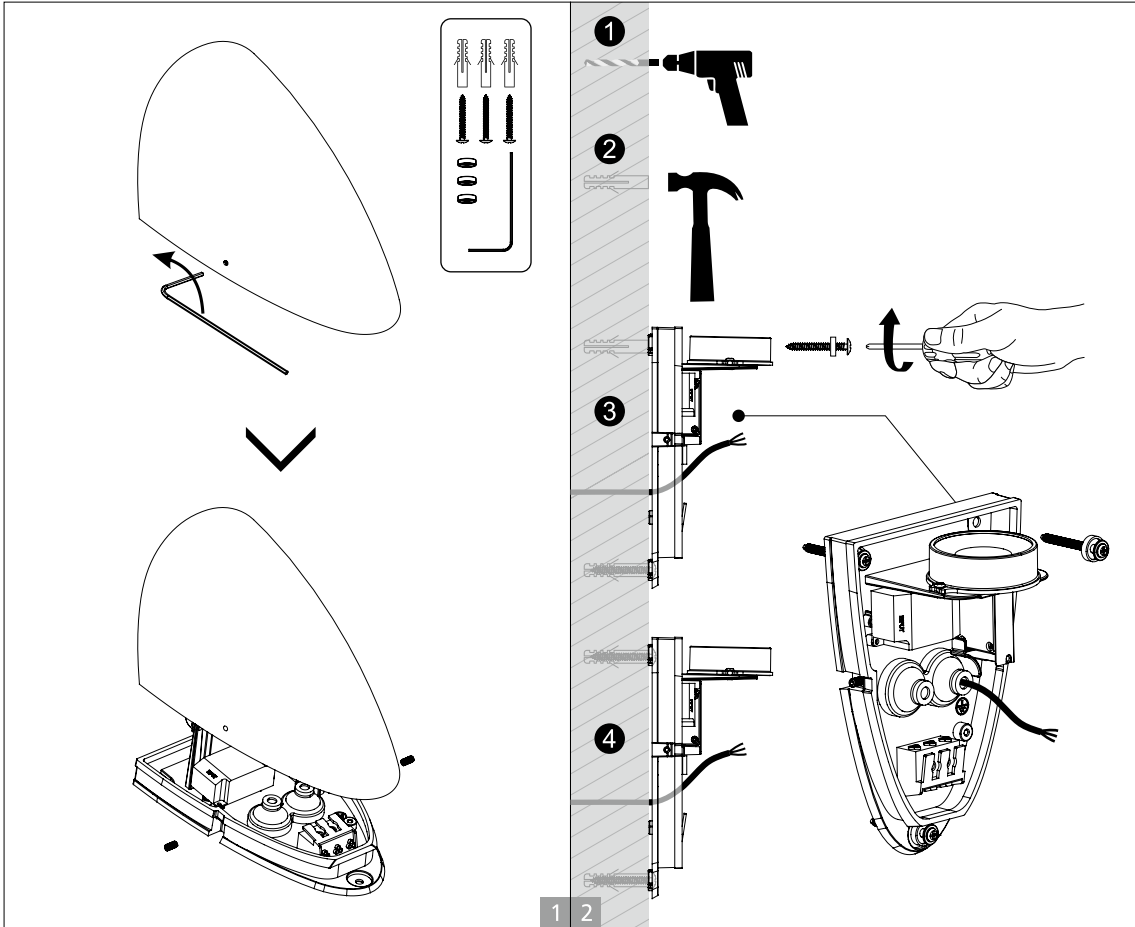
Installation Instruction

WARNING

- 1.Switch off before installation.  
2.Switch on only after complete installation and examination of the circuit.  
3.Professional electrician for installation and maintenance only.



Wall mounted installation







*The Professional Choice in LED Lighting*

[www.genesisone.co.za](http://www.genesisone.co.za) [sales@genesisone.co.za](mailto:sales@genesisone.co.za) TEL: +27 (0)11 4620251

Add: 2 Lancaster Place, Electron Lane, Lanseria Corporate Estate, Lanseria 1748 Johannesburg, South Africa